



Nystagmus glasses TYPE 523

Product description

Our reliable and proven nystagmus spectacles type 523 according to Dr. Blessing for short-term examinations, in mobile use with:

- » solid glasses
- » indirect illumination
- » adjustable battery handle

The illumination of the nystagmus spectacles according to Dr. Blessing is indirect, so no light reflections can occur, which lead to an undesirable, nystagmus-inhibiting gaze fixation in the patient. Since direct illumination of the eye is prevented by the shielding of the illuminated bulbs, no PURKINJE vein image occurs, which can trigger a random illuminated spectacle nystagmus by its movements, so that false positive nystagmus findings can be excluded.

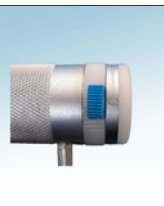
The actual lighted eyeglass examination takes place in a dark room or heavily darkened room. The interior illumination of the glasses interrupts the patient's optical contact with his environment (elimination of nystagmus-inhibiting fixation). At the same time, the brightly illuminated eyes are particularly easy to observe under the magnifying glasses. In many cases, pathological nystagmus processes are detectable when looking straight ahead, which are not or not reliably detectable without glasses, even when looking sideways.

This model enables wireless operation and can be used independently of the power supply. The power supply of the nystagmus spectacles is provided by the fixed top-mounted, adjustable battery handle, which is designed to accept three size C LR14/AM-2 batteries (baby cells) of 1.5 volts each. (Batteries are not included!). Via the adjustable battery handle, you can individually adjust the light intensity by slightly turning the switch. The nystagmus spectacles type 503 according to Dr. Blessing are operated with two 4-volt lamps, which can be obtained from medical dealers.

Scope of delivery



1x Nystagmus spectacles type 523



Detail view adjustable battery handle

With the adjustable battery handle, the light intensity can be adjusted individually by slightly turning the switch.

Spare parts



Spare lamp type 507

The Nystagmus Spectacle Type 523 is powered by two 4 volt; 0.23 amp; 1 watt bulbs (thread diameter 3.5 mm x 0.35 mm).



Cover type 57.20.02

The cover provides the shielding of the light bulb.